

## ASX Announcement

12 October 2020

### Multiple Resource Grade Intersections Extend Mineralisation at Apollo Hill

#### Highlights

- **Multiple significant intersections have been returned from extensional hanging-wall positions at Apollo Hill:**
  - **9m @ 2.06g/t Au** from 132m – AHRC382
  - **7m @ 1.93g/t Au** from 209m – AHRC0382
  - **6m @ 1.14g/t Au** from 120m – AHRC0381
  - **5m @ 1.04g/t Au** from 210m within 17m @ 0.5g/t Au from 198m – AHRC0383
  - **5m @ 1.16g/t Au** from 204m within 15m @ 0.48g/t Au from 194m – AHRC0380
- **Drilling on the Apollo Hill main zone continues to extend and improve mineralisation with significant resource grade intersections including:**
  - **8m @ 2.87g/t Au** from 219m – AHRC0286
  - **11m @ 1.42g/t Au** from 118m – AHRC0145
  - **12m @ 1.04g/t Au** from 339m and **8m @ 1.11g/t Au** from 363m within 40m @ 0.63g/t Au from 331m – AHRC0383
  - **7m @ 1.27g/t Au from 29m** – AHRC0436
  - **5m @ 1.94g/t Au from 16m** – AHRC0433
- **A significant exploratory intersection of 6m @ 2.5g/t Au from 110m** was returned in hole AHRC0434 at the Wadjet deposit north of the Ra Zone, and west and immediately adjacent to Apollo Hill (Figure 3 – plan view).
- All holes reported returned intercepts above the Apollo Hill resource cut-off grade, and 16 of the 20 holes reported intersected mineralisation above the average resource grade.
- The new results, when coupled with other recent results (see ASX announcements dated 24 August and 7 September 2020), provide further scope for resource extension and we look forward to including them in the resource upgrade process planned for late 2020.
- **Assays remain pending for 50 holes** drilled as follow-up around these intersections.
- Importantly, the majority of reported intersections sit outside the current Mineral Resource of 24.5 million tonnes grading 1.0g/t Au for 781,000 ounces of gold<sup>1</sup>, and highlight the potential to increase the size and quality of the Apollo Hill gold system.
- Infill and extensional drilling continues with three reverse circulation (RC) rigs on site.

<sup>1</sup>Details of the Mineral Resource which currently stands at 24.5 million tonnes grading 1.0 g/t gold for 781,000 ounces and a breakdown by category are presented in Table 1a (page 9 of this document) along with the associated Competent Persons statement and details of the original ASX announcement that this information was originally published in.

Saturn Metals Limited (ASX:STN) ("Saturn", "the Company") is pleased to announce further positive results from ongoing RC drilling at the Apollo Hill deposit within its 100%-owned Apollo Hill Gold Project, 60km south-east of Leonora in the Western Australian goldfields.

This drilling is a key part of the Company's strategy to grow the Apollo Hill 781,000oz Mineral Resource<sup>1</sup>. A further resource upgrade is targeted for late 2020, incorporating results from drilling conducted since October 2019 when the resource estimate was last updated.

Figure 1 illustrates a simplified geological cross section of extensional hanging-wall results in the north of the Apollo Hill deposit where a large and robust mineralised system is becoming increasingly apparent (location of cross section illustrated in plan view on Figure 3).

Figure 2 shows a simplified geological cross section of extensional main lode and hanging-wall results in the south-central area of the Apollo Hill deposit (location of cross section illustrated in plan view on Figure 3).

Table 1 lists all significant intersections from the recently received assay results.

Table 2 lists relevant hole details. Figure 3 highlights the new results in plan view, together with the location of holes for which assays remain pending.

Saturn Managing Director Ian Bamborough said: *"Results are consistently extending the mineralised system at Apollo Hill. We look forward to receiving the next batch shortly and to incorporating them into the next resource upgrade process planned for later this year. With assays pending for 50 holes and three rigs focused on resource expansion, the Company is as busy as it has ever been and making good progress towards realising Apollo Hill's full potential."*



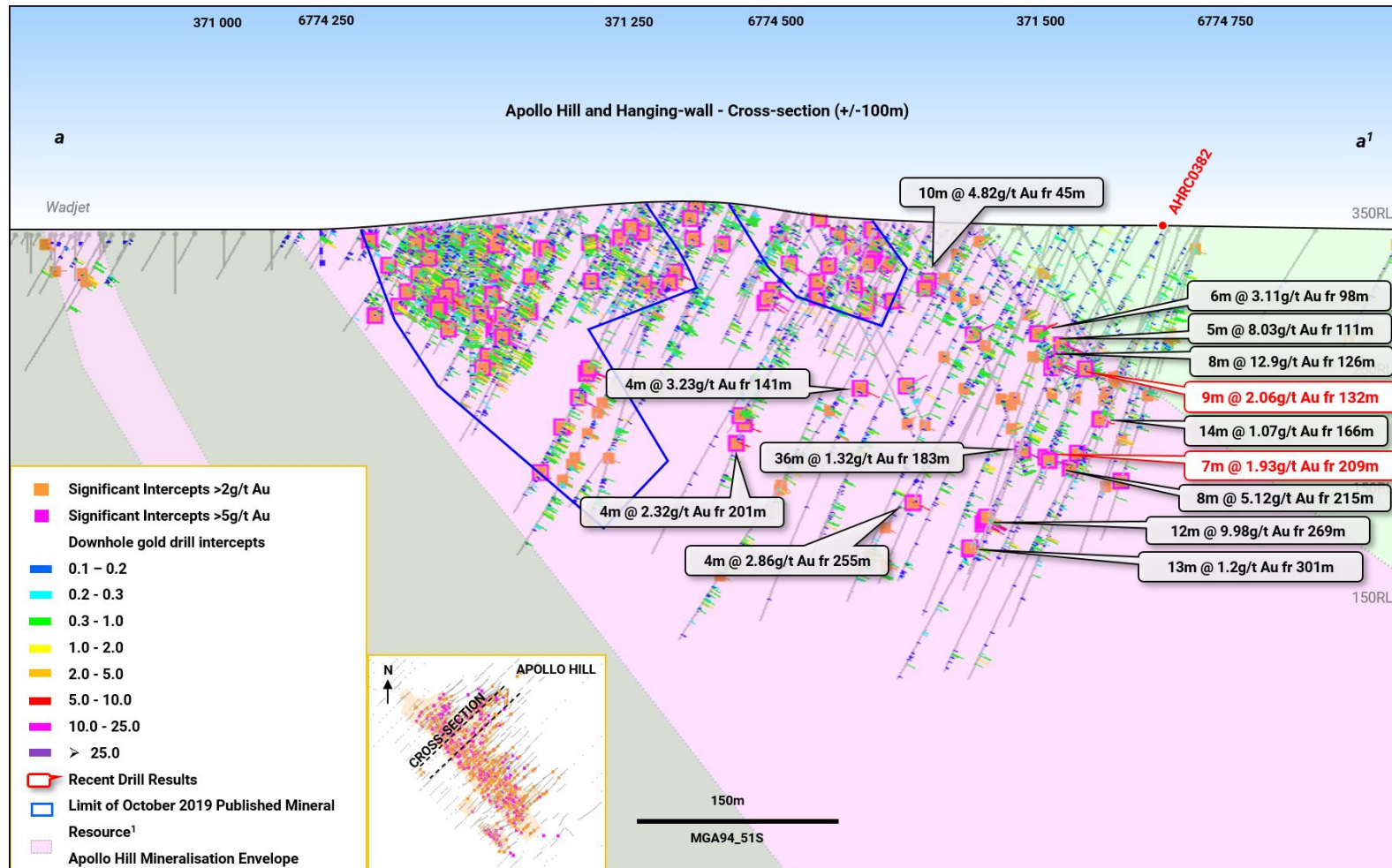
**Plate 1 – Three rigs pictured in the background at the northern Apollo Hill hanging-walls (photo taken 29 September 2020)**

Saturn will provide further information from the exploration and resource drilling at Apollo Hill as results are received and analysed.

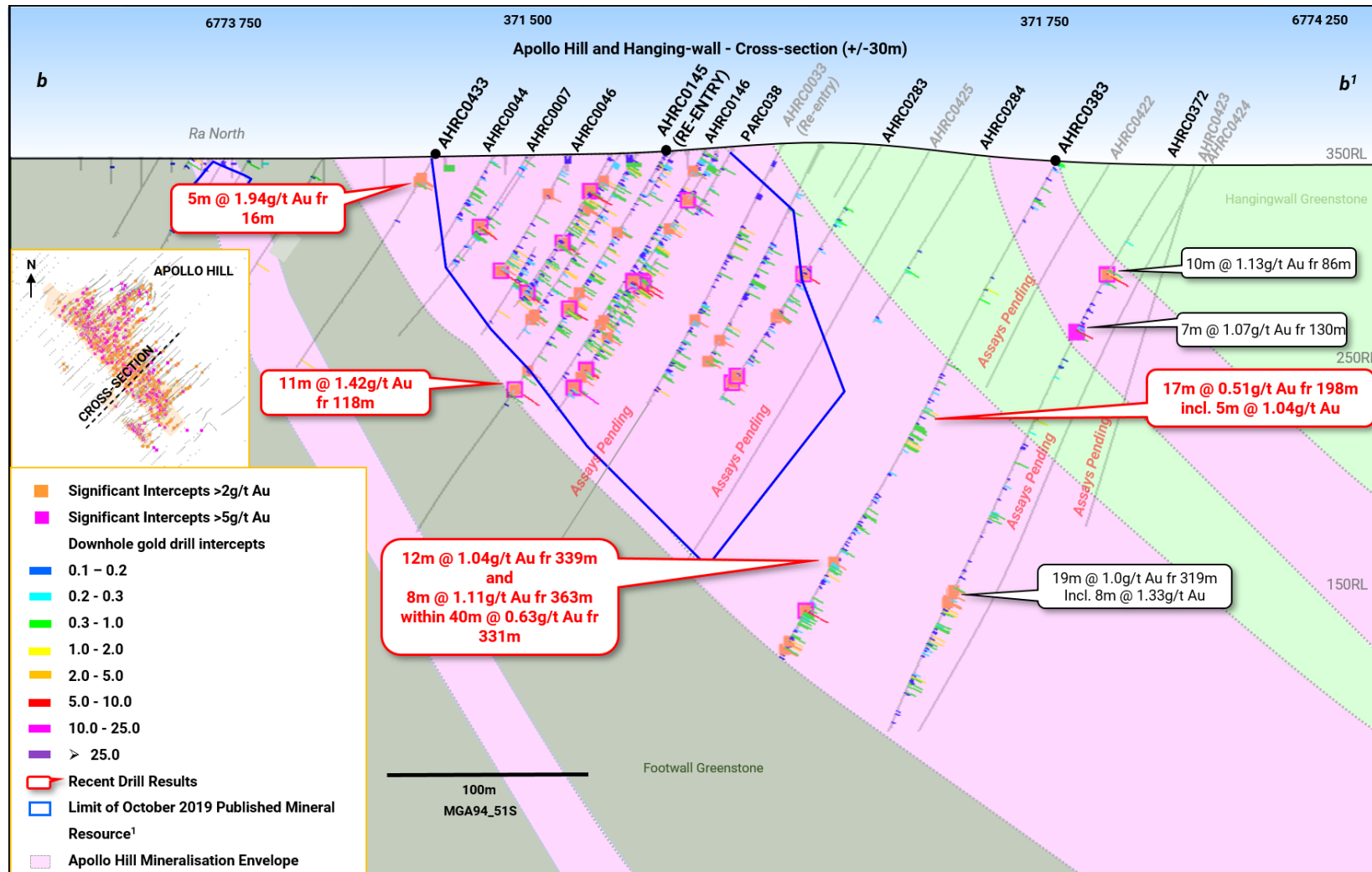
This announcement has been approved for release by the Saturn Metals Limited Board of Directors.

**IAN BAMBOROUGH**  
Managing Director  
Saturn Metals Limited  
08 6424 8695

**LUKE FORRESTAL**  
Associate Director  
Media and Capital Partners  
0411 479 144

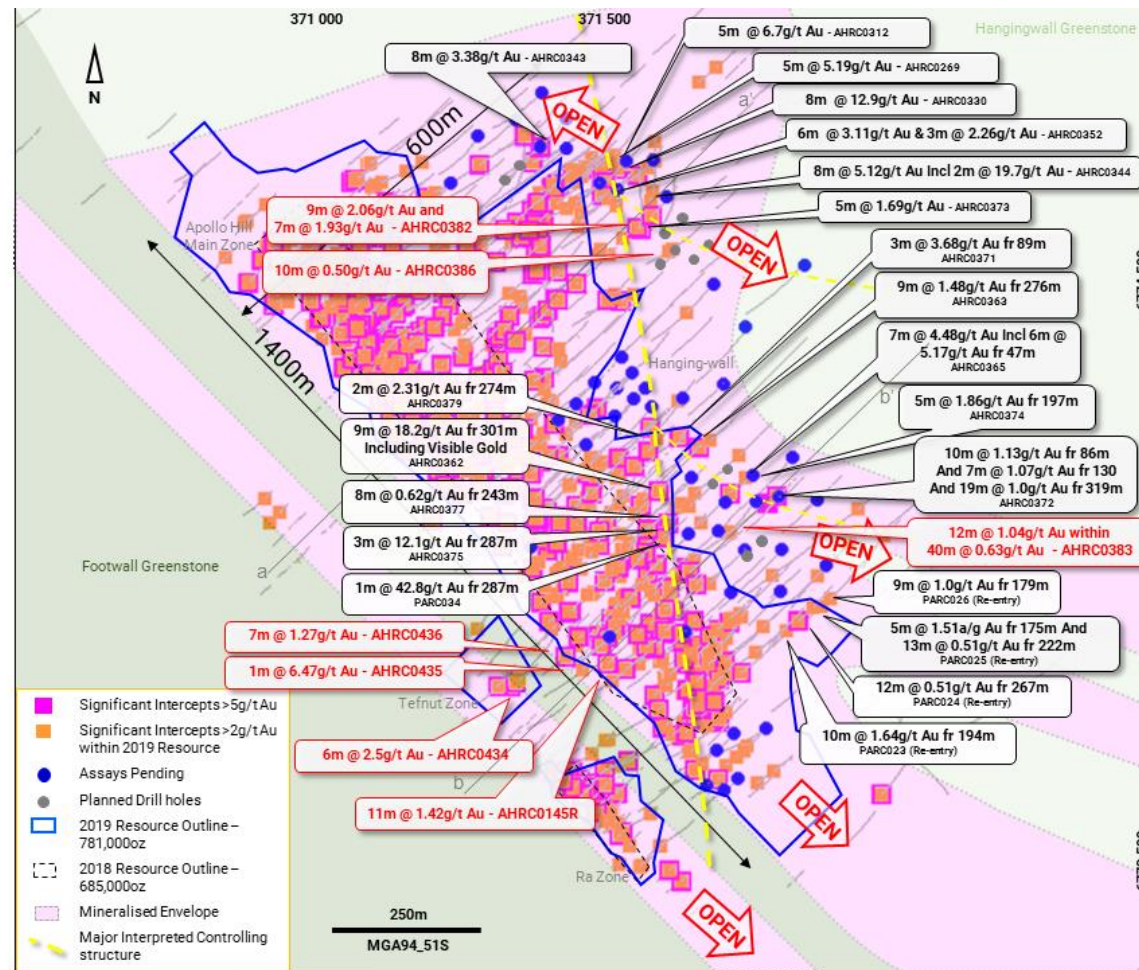


**Figure 1—Simplified geological cross section a-a' of recent drill results and planned follow up drilling (location illustrated on plan view in Figure 3).** <sup>(a)</sup> This diagram contains exploration results and historic exploration results as originally reported in fuller context in Saturn Metals Limited ASX Announcements as published on the Company's website. Saturn Metals Limited confirms that it is not aware of any new information or data that materially affects the information on results noted



**Figure 2—Simplified geological cross section b-b' of recent drill results and planned follow up drilling (location illustrated on plan view in Figure 3).** (a) This diagram contains exploration results and historic exploration results as originally reported in fuller context in Saturn Metals Limited ASX Announcements as published on the Company's website. Saturn Metals Limited confirms that it is not aware of any new information or data that materially affects the information on results noted.





**Figure 3 Resource extension drilling and results and holes for which assays remain pending relative to the published resource (locations of cross sections a-a'-Figure1 and b'-Figure 2 also illustrated).** <sup>(a)</sup> This diagram contains exploration results and historic exploration results as originally reported in fuller context in Saturn Metals Limited ASX Announcements as published on the Company's website. Saturn Metals Limited confirms that it is not aware of any new information or data that materially affects the information on results noted.

Table 1. Significant drill results.

Hole #	Down Hole Width (m)	Grade (g/t Au)	From (m)	Location
AHRC0382	9	2.06	132	Hanging-wall
	7	1.93	209	
AHRC0286R	8	2.87	219	Main Lode
AHRC0383 Incl.	17	0.51	198	Hanging-wall
	5	1.04	210	
AHRC0383 Incl.	10	0.69	304	Main Lode Main Lode
	40	0.63	331	
	12	1.04	339	
	8	1.11	363	
AHRC0434	3	1.04	80	Wadjet
	6	2.50	110	
AHRC0145R	11	1.42	118	Main Lode
	1	9.59	189	
AHRC0381	6	1.14	120	Hanging-wall
	13	0.41	243	
	5	0.77	290	
	6	0.65	346	
	2	1.73	369	
AHRC0433	5	1.94	16	Main Lode
AHRC0436	17	0.30	5	Main Lode
	7	1.27	29	
AHRC0376	4	1.33	156	Ra
AHRC0380 Incl.	15	0.48	194	Hanging-wall
	5	1.16	204	
AHRC0287R	36	0.52	157	
AHRC0411	3	1.47	47	Hanging-wall
	15	0.76	210	
	10	0.57	306	
AHRC0437	12	0.58	7	Main Lode
AHRC0435	1	6.47	28	Main Lode
AHRC0386	10	0.50	133	
AHRC0385	1	3.54	55	Hanging-wall
	4	0.52	160	
AHRC0378	2	1.71	139	Hanging-wall
	4	0.62	184	
AHRC0384	4	0.69	91	Hanging-wall
AHRC0432	10	0.43	16	
AHRC0236R	5	0.40	325	Main Lode

**Table 2. Completed RC holes – reported hole details, MGA94\_Z51.**

Hole #	Easting	Northing	RL (m)	Dip°	Azi°	Depth (m)
AHRC0145R	371550	6773970	359	-60	225	304
AHRC0236R	372306	6773879	351	-49	223	400
AHRC0286R	371724	6773935	354	-60	225	322
AHRC0287R	371757	6773895	352	-60	225	304
AHRC0376	371586	6773714	354	-60	225	220
AHRC0378	371,817	6773955	353	-60	225	286
AHRC0380	371741	6774428	354	-60	225	310
AHRC0381	371783	6774264	354	-50	225	371
AHRC0382	371617	6774675	354	-55	225	310
AHRC0383	371742	6774130	360	-60	225	377
AHRC0384	371511	6774403	350	-60	225	210
AHRC0385	371750	6774175	351	-70	225	184
AHRC0386	371682	6774504	354	-60	225	322
AHRC0411	371934	6774072	345	-60	225	352
AHRC0432	371664	6773719	376	-60	225	149
AHRC0433	371460	6773840	355	-60	225	167
AHRC0434	371377	6773845	357	-60	225	125
AHRC0435	371438	6773866	356	-60	225	112
AHRC0436	371326	6774059	363	-60	225	71
AHRC0437	371606	6773813	353	-60	225	71

### Saturn Metals Project Areas

Apollo Hill (29.15°S and 121.68°E) is located approximately 60km south-east of Leonora in the heart of WA's goldfields region (Figure 4). The deposit and the Apollo Hill project are 100% owned by Saturn Metals and are surrounded by good infrastructure and several significant gold deposits. The Apollo Hill Project has the potential to become a large tonnage, simple metallurgy, low strip open pit mining operation.

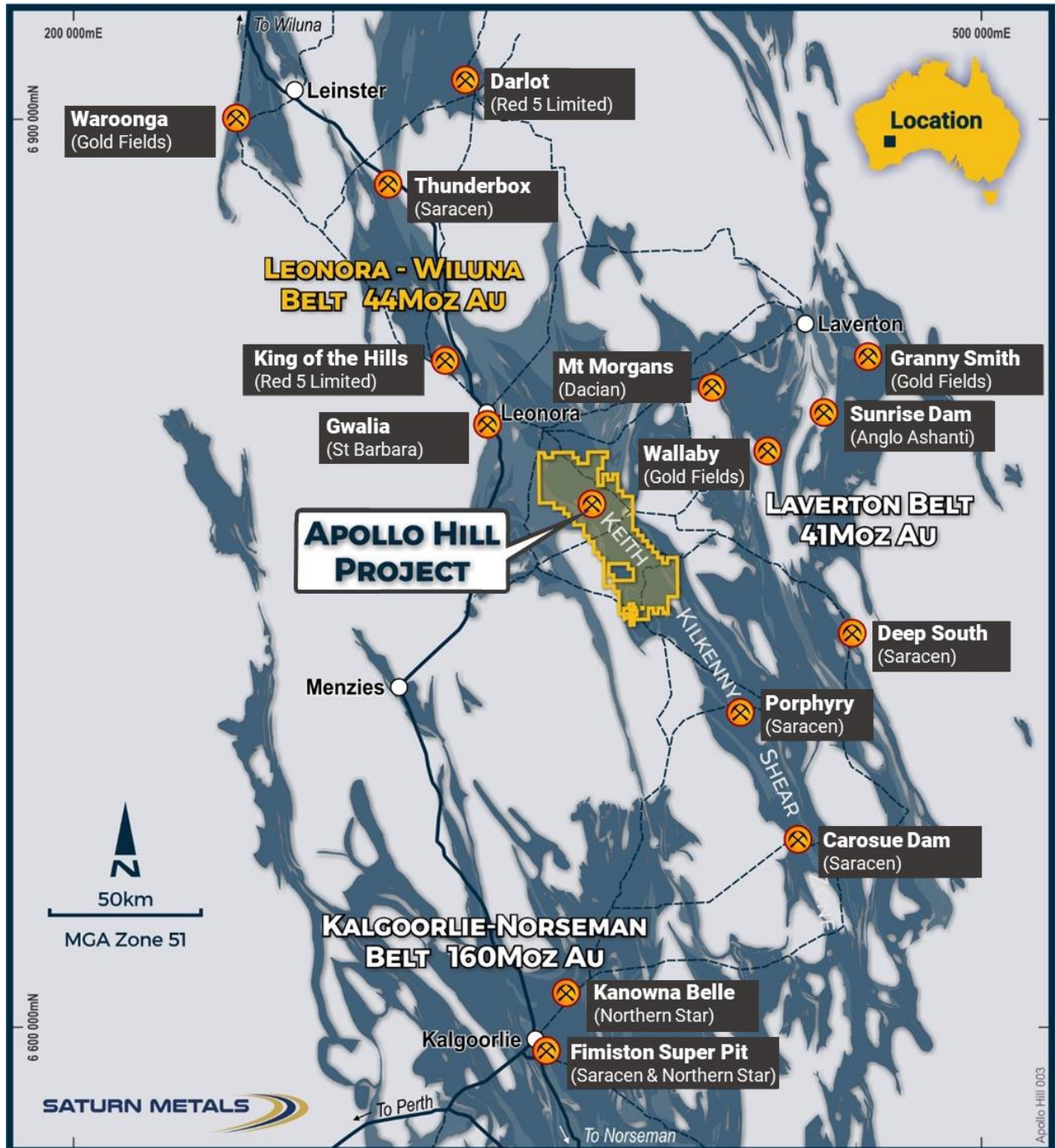
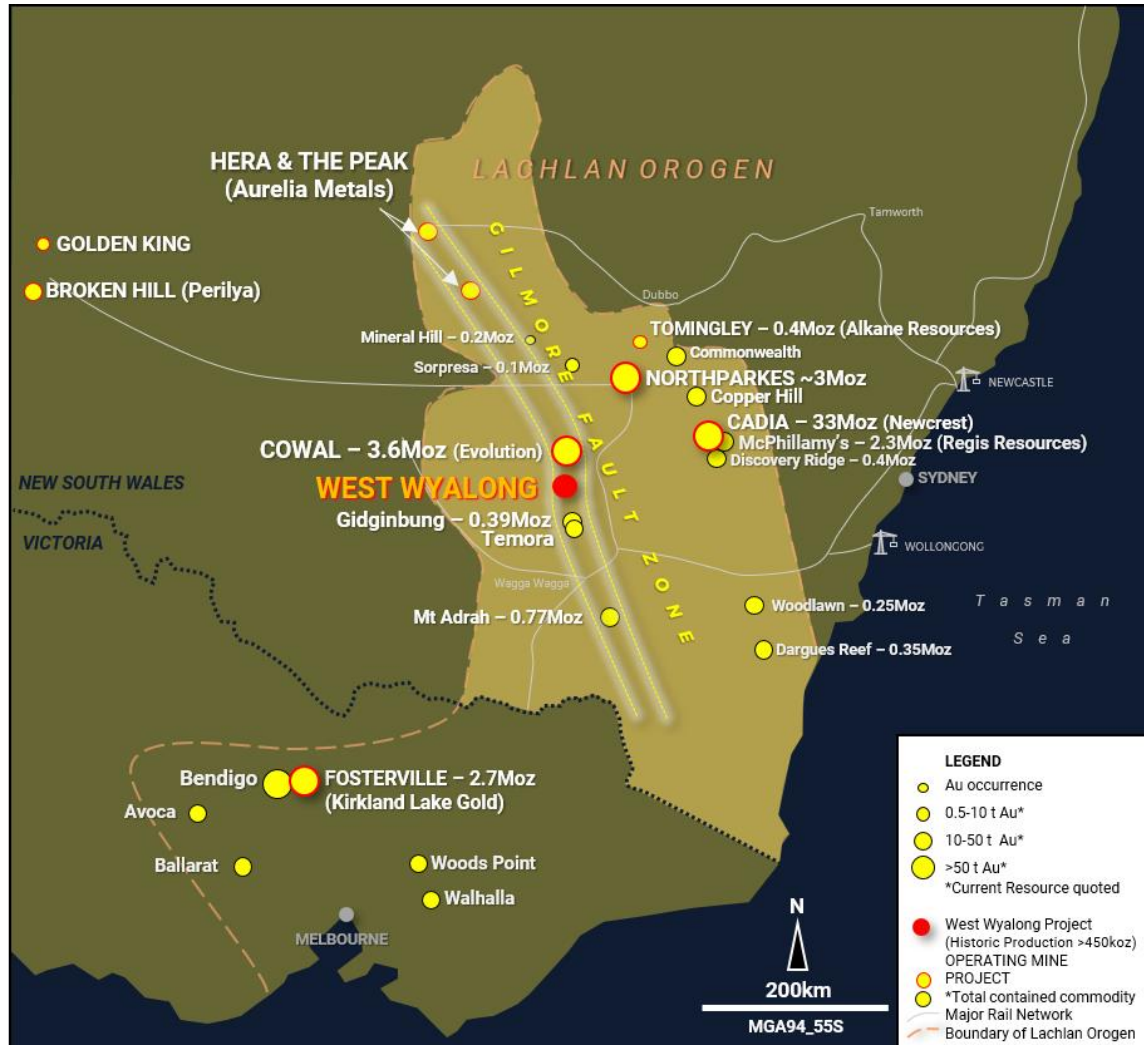


Figure 4. Apollo Hill location, Saturn Metals' tenements and surrounding gold deposits, gold endowment and infrastructure.



In addition, Saturn Metals has now secured a second quality gold exploration project in Australia. The Company has an option to earn an 85% joint venture interest in the West Wyalong Project (Figure 5), which represents a high-grade vein opportunity on the highly gold prospective Gilmore suture within the famous Lachlan Fold belt of NSW.



**Figure 5 – Regional setting and location of the West Wyalong Gold Project in relation to other gold projects in New South Wales and Victoria** (map taken from Saturn ASX announcement on 28 April 2020 where full references are provided).

### Competent Persons Statement Resource

<sup>1</sup>The information for the Mineral Resource included in this report is extracted from the report entitled (Apollo Hill Gold Resource Upgraded to 781,000oz) created on 14 October 2019 and is available to view on the Saturn Metals Limited website. Saturn Metals Limited confirms that it is not aware of any new information or data that materially affects the information included in the original market announcement and, in the case of estimates of Mineral Resources or Ore Reserves, that all material assumptions and technical parameters underpinning the estimates in the relevant market announcement continue to apply and have not materially changed. Saturn Metals Ltd confirms that the form and context in which the Competent Person's findings are presented have not been materially modified from the original market announcement.

**Table 1a\* October 2019 Apollo Hill Mineral Resource**

Lower Cut-off Grade (Au g/t)	Oxidation state	Measured			Indicated			Inferred			MII Total		
		Tonnes (Mtonnes)	Au (g/t)	Au Metal (KOzs)	Tonnes (Mtonnes)	Au (g/t)	Au Metal (KOzs)	Tonnes (Mtonnes)	Au (g/t)	Au Metal (KOzs)	Tonnes (Mtonnes)	Au (g/t)	Au Metal (KOzs)
0.5	Oxide	0	0	0	0.2	1.0	7	0.4	0.9	11	0.6	0.9	18
	Transitional	0	0	0	2.1	1.0	70	1.5	1.0	47	3.6	1.0	117
	Fresh	0	0	0	6.9	1.0	221	13.4	1.0	425	20.3	1.0	646
	Total	0	0	0	9.2	1.0	298	15.3	1.0	483	24.5	1.0	781

The models are reported above nominal RLs (180 mRL – this is approximately 180 metres below surface (mbs) (accounting for localised variations in topography) for the Apollo Hill main zone and 260 mRL or 90mbs for Ra the deposit and the Apollo Hill Hanging-walls – and nominal 0.5 g/t Au lower cut-off grade for all material types. Classification is according to JORC Code Mineral Resource categories. Totals may vary due to rounded figures.

### Competent Persons Statement Exploration

The information in this report that relates to exploration targets and exploration results is based on information compiled by Ian Bamborough, a Competent Person who is a Member of The Australian Institute of Geoscientists. Ian Bamborough is a fulltime employee and Director of the Company, in addition to being a shareholder in the Company. Ian Bamborough has sufficient experience that is relevant to the style of mineralisation and type of deposit under consideration and to the activity being undertaken to qualify as a Competent Person as defined in the 2012 Edition of the 'Australasian Code for Reporting of Exploration Results, Mineral Resources and Ore Reserves'. Ian Bamborough consents to the inclusion in the report of the matters based on his information in the form and context in which it appears.

<sup>a</sup>This document contains exploration results and historic exploration results as originally reported in fuller context in Saturn Metals Limited ASX Announcements, Quarterly Reports and Prospectus - as published on the Company's website. Saturn Metals Limited confirms that it is not aware of any new information or data that materially affects the information on results noted. Announcement dates to refer to include but are not limited to 07/09/2020, 24/08/2020, 30/07/2020, 10/07/2020, 10/06/2020, 02/06/2020, 05/05/2020, 21/04/2020, 30/03/2020, 13/03/2020, 12/03/20, 25/02/2020, 19/02/2020, 14/01/2020.

## JORC Code, 2012 Edition – Table 1 - Apollo Hill Exploration Area

### Section 1 Sampling Techniques and Data

(Criteria in this section apply to the Apollo Hill and Ra exploration area and all succeeding sections.)

Criteria	JORC Code explanation	Commentary
<b>Sampling techniques</b>	<ul style="list-style-type: none"> <li>Nature and quality of sampling (eg cut channels, random chips, or specific specialised industry standard measurement tools appropriate to the minerals under investigation, such as down hole gamma sondes, or handheld XRF instruments, etc). These examples should not be taken as limiting the broad meaning of sampling.</li> <li>Include reference to measures taken to ensure sample representivity and the appropriate calibration of any measurement tools or systems used.</li> <li>Aspects of the determination of mineralisation that are Material to the Public Report.</li> <li>In cases where 'industry standard' work has been done this would be relatively simple (eg 'reverse circulation drilling was used to obtain 1 m samples from which 3 kg was pulverised to produce a 30 g charge for fire assay'). In other cases more explanation may be required, such as where there is coarse gold that has inherent sampling problems. Unusual commodities or mineralisation types (eg submarine nodules) may warrant disclosure of detailed information.</li> </ul>	<ul style="list-style-type: none"> <li>Measures taken to ensure the representivity RC sampling include close supervision by geologists, use of appropriate sub-sampling methods, routine cleaning of splitters and cyclones, and RC rigs with sufficient capacity to provide generally dry, reasonable recovery samples. Information available to demonstrate sample representivity includes RC sample weights, sample recovery, sample consistency, field duplicates, standards and blanks.</li> <li>RC holes were sampled over 1m intervals by cone-splitting. RC samples were analysed by SGS in Kalgoorlie or ALS in Kalgoorlie. Samples were oven dried and crushed to 90% passing 2mm, and pulverised to 95% passing 106 microns, with analysis by 50g fire assay.</li> </ul>
<b>Drilling techniques</b>	<ul style="list-style-type: none"> <li>Drill type (eg core, reverse circulation, open-hole hammer, rotary air blast, auger, Bangka, sonic, etc) and details (eg core diameter, triple or standard tube, depth of diamond tails, face-sampling bit or other type, whether core is oriented and if so, by what method, etc).</li> </ul>	<ul style="list-style-type: none"> <li>Reverse Circulation (RC)</li> <li>RC drilling used generally 4.5"-5.5" face- sampling bits.</li> </ul>
<b>Drill sample recovery</b>	<ul style="list-style-type: none"> <li>Method of recording and assessing core and chip sample recoveries and results assessed.</li> <li>Measures taken to maximise sample recovery and ensure representative nature of the samples.</li> <li>Whether a relationship exists between sample recovery and grade and whether sample bias may have occurred due to preferential loss/gain of fine/coarse material.</li> </ul>	<ul style="list-style-type: none"> <li>Sample recovery was visually estimated by volume for each 1m bulk sample bag, and recorded digitally in the sample database. Very little variation was observed.</li> <li>Measures taken to maximise recovery for RC drilling included use of face sampling bits and drilling rigs of sufficient capacity to provide generally dry, high recovery samples. RC sample weights indicate an average recovery of 85-95% and were dry.</li> <li>The cone splitter was regularly cleaned with compressed air at the completion of each rod.</li> </ul>
<b>Logging</b>	<ul style="list-style-type: none"> <li>Whether core and chip samples have been geologically and geotechnically logged to a level of detail to support appropriate Mineral Resource estimation, mining studies and metallurgical studies.</li> <li>Whether logging is qualitative or quantitative in nature. Core (or costean, channel, etc) photography.</li> <li>The total length and percentage of the relevant intersections logged.</li> </ul>	<ul style="list-style-type: none"> <li>Drill holes were geologically logged by industry standard methods, including lithology, alteration, mineralisation and weathering.</li> <li>RC Chip trays were photographed.</li> <li>The logging is qualitative in nature and of sufficient detail to support the current interpretation.</li> </ul>
<b>Sub-sampling techniques and</b>	<ul style="list-style-type: none"> <li>If core, whether cut or sawn and whether quarter, half or all core taken.</li> <li>If non-core, whether riffled, tube sampled, rotary split, etc and whether sampled wet or dry.</li> </ul>	<ul style="list-style-type: none"> <li>RC holes were sampled over 1m intervals by cone-splitting. RC sampling was closely supervised by field geologists and included appropriate sampling methods, routine cleaning of splitters and cyclones, and rigs with sufficient capacity to provide generally</li> </ul>

Criteria	JORC Code explanation	Commentary
<b>sample preparation</b>	<ul style="list-style-type: none"> <li>For all sample types, the nature, quality and appropriateness of the sample preparation technique.</li> <li>Quality control procedures adopted for all sub-sampling stages to maximise representivity of samples.</li> <li>Measures taken to ensure that the sampling is representative of the in-situ material collected, including for instance results for field duplicate/second-half sampling.</li> <li>Whether sample sizes are appropriate to the grain size of the material being sampled.</li> </ul>	<p>dry, high recovery RC samples. Sample representivity monitoring included weighing RC samples and field duplicates.</p> <ul style="list-style-type: none"> <li>Assay samples were crushed to 90% passing 2mm, and pulverised to 95% passing 75 microns, with fire assay of 50g sub-samples. Assay quality monitoring included reference standards and inter-laboratory checks assays.</li> <li>Duplicate and blank samples were collected every 20 samples.</li> <li>Certified reference material samples were submitted to the laboratory every 100 samples.</li> <li>The project is at an early stage of evaluation and the suitability of sub-sampling methods and sub-sample sizes for all sampling groups has not been comprehensively established. The available data suggests that sampling procedures provide sufficiently representative sub-samples for the current interpretation.</li> </ul>
<b>Quality of assay data and laboratory tests</b>	<ul style="list-style-type: none"> <li>The nature, quality and appropriateness of the assaying and laboratory procedures used and whether the technique is considered partial or total.</li> <li>For geophysical tools, spectrometers, handheld XRF instruments, etc, the parameters used in determining the analysis including instrument make and model, reading times, calibrations factors applied and their derivation, etc.</li> <li>Nature of quality control procedures adopted (eg standards, blanks, duplicates, external laboratory checks) and whether acceptable levels of accuracy (ie lack of bias) and precision have been established.</li> </ul>	<ul style="list-style-type: none"> <li>Sampling included field duplicates, blind reference standards, field blanks and inter-laboratory checks confirm assay precision and accuracy with sufficient confidence for the current results.</li> <li>Samples were submitted to ALS Laboratories in Kalgoorlie, where they were prepared, processed and analysed via fire assay.</li> </ul>
<b>Verification of sampling and assaying</b>	<ul style="list-style-type: none"> <li>The verification of significant intersections by either independent or alternative company personnel.</li> <li>The use of twinned holes.</li> <li>Documentation of primary data, data entry procedures, data verification, data storage (physical and electronic) protocols.</li> <li>Discuss any adjustment to assay data.</li> </ul>	<ul style="list-style-type: none"> <li>No independent geologists were engaged to verify results. Saturn Metals project geologists were supervised by the company's Exploration Manager. No adjustments were made to any assays of data.</li> <li>Logs were recorded by field geologists on hard copy sampling sheets which were entered into spreadsheets for merging into a central SQL database.</li> <li>Laboratory assay files were merged directly into the database. The project geologists routinely validate data when loading into the database.</li> </ul>
<b>Location of data points</b>	<ul style="list-style-type: none"> <li>Accuracy and quality of surveys used to locate drill holes (collar and down-hole surveys), trenches, mine workings and other locations used in Mineral Resource estimation.</li> <li>Specification of the grid system used.</li> <li>Quality and adequacy of topographic control.</li> </ul>	<ul style="list-style-type: none"> <li>Collars are surveyed by handheld GPS, utilising GDA94, Zone 51.</li> <li>All RC holes were down-hole surveyed, by Gyro.</li> <li>A topographic triangulation was generated from drill hole collar surveys.</li> </ul>
<b>Data spacing and distribution</b>	<ul style="list-style-type: none"> <li>Data spacing for reporting of Exploration Results.</li> <li>Whether the data spacing, and distribution is sufficient to establish the degree of geological and grade continuity appropriate for the Mineral Resource and Ore Reserve estimation procedure(s) and classifications applied.</li> <li>Whether sample compositing has been applied.</li> </ul>	<ul style="list-style-type: none"> <li>Apollo Hill mineralisation has been tested by generally 30m spaced traverses of south-westerly inclined drill holes towards 225°. Across strike spacing is variable. The upper approximately 50m has been generally tested by 20-30m spaced holes, with deeper drilling ranging from locally 20m to commonly greater than 60m spacing.</li> <li>The data spacing is sufficient to establish geological and grade and continuity.</li> </ul>
<b>Orientation of data in relation to geological structure</b>	<ul style="list-style-type: none"> <li>Whether the orientation of sampling achieves unbiased sampling of possible structures and the extent to which this is known, considering the deposit type.</li> <li>If the relationship between the drilling orientation and the orientation of key mineralised structures is considered to have introduced a sampling bias, this should be assessed and reported if material.</li> </ul>	<ul style="list-style-type: none"> <li>Mineralised zones dip at an average of around 50° to the northeast. Detailed orientations of all short-scale mineralised features have not yet been confidently established. The majority of the drill holes were inclined at around 60° to the southwest. All hole details for reported results are noted in Table 2 of this announcement.</li> </ul>



Criteria	JORC Code explanation	Commentary
<b>Sample security</b>	<ul style="list-style-type: none"> <li>The measures taken to ensure sample security.</li> </ul>	<ul style="list-style-type: none"> <li>Apollo Hill is in an isolated area, with little access by general public. Saturn's field sampling was supervised by Saturn geologists. Sub-samples selected for assaying were collected in heavy-duty polywoven plastic bags which were immediately sealed. These bags were delivered to the assay laboratory by independent couriers, Saturn employees or contractors.</li> <li>Results of field duplicates, blanks and reference material, and the general consistency of results between sampling phases provide confidence in the general reliability of the drilling data.</li> </ul>
<b>Audits or reviews</b>	<ul style="list-style-type: none"> <li>The results of any audits or reviews of sampling techniques and data.</li> </ul>	<ul style="list-style-type: none"> <li>The competent person independently reviewed Saturn's sample quality information and database validity. These reviews included consistency checks within and between database tables and comparison of assay entries with original source records for Saturn's drilling. These reviews showed no material discrepancies. The competent person considers that the Apollo Hill drilling data has been sufficiently verified to provide an adequate basis for the current reporting of exploration results.</li> </ul>

## Section 2 Reporting of Exploration Results

(Criteria listed in the preceding section also apply to this section.)

Criteria	JORC Code explanation	Commentary
<b>Mineral tenement and land tenure status</b>	<ul style="list-style-type: none"> <li>Type, reference name/number, location and ownership including agreements or material issues with third parties such as joint ventures, partnerships, overriding royalties, native title interests, historical sites, wilderness or national park and environmental settings.</li> <li>The security of the tenure held at the time of reporting along with any known impediments to obtaining a licence to operate in the area.</li> </ul>	<ul style="list-style-type: none"> <li>The results are from the Saturn Metals Limited's Apollo Hill Project which lies within Exploration Licence E39/1198, M31/486 and M39/296. These tenements are wholly owned by Saturn Metals Limited. These tenements, along with certain other tenure, are the subject of a 5% gross over-riding royalty (payable to HHM) on Apollo Hill gold production exceeding 1 million ounces. M39/296 is the subject of a \$1/t royalty (payable to a group of parties) on any production.</li> <li>The tenements are in good standing and no known impediments exist.</li> </ul>
<b>Exploration done by other parties</b>	<ul style="list-style-type: none"> <li>Acknowledgment and appraisal of exploration by other parties.</li> </ul>	<ul style="list-style-type: none"> <li>Aircore, RC and diamond drilling by previous tenement holders provides around 82% of the estimation dataset. The data is primarily from RC and diamond drilling by Battle Mountain (33%), Apex Minerals (18%), Fimiston Mining (13%), Hampton Hill (12%). Homestake and MPI holes provide 5% and 1%, respectively.</li> </ul>
<b>Geology</b>	<ul style="list-style-type: none"> <li>Deposit type, geological setting and style of mineralisation.</li> </ul>	<ul style="list-style-type: none"> <li>The Apollo Hill project comprises two deposits: The main Apollo Hill deposit in the north-west of the project area, and the smaller Ra Deposit in the south. Gold mineralisation is associated with quartz veins and carbonate-pyrite alteration along a steeply north-east dipping contact between felsic rocks to the west, and mafic dominated rocks to the east. The combined mineralised zones extend over a strike length of approximately 1.4km and have been intersected by drilling to approximately 350m depth.</li> <li>The depth of complete oxidation averages around 4m with depth to fresh rock averaging around 21m.</li> </ul>

Criteria	JORC Code explanation	Commentary
<b>Drill hole Information</b>	<ul style="list-style-type: none"> <li>A summary of all information material to the understanding of the exploration results including a tabulation of the following information for all Material drill holes: <ul style="list-style-type: none"> <li>easting and northing of the drill hole collar</li> <li>elevation or RL (Reduced Level – elevation above sea level in metres) of the drill hole collar</li> <li>dip and azimuth of the hole</li> <li>down hole length and interception depth</li> <li>hole length.</li> </ul> </li> <li>If the exclusion of this information is justified on the basis that the information is not Material and this exclusion does not detract from the understanding of the report, the Competent Person should clearly explain why this is the case.</li> </ul>	<ul style="list-style-type: none"> <li>All relevant information material to the understanding of exploration results has been included within the body of the announcement or as appendices.</li> <li>No information has been excluded.</li> </ul>
<b>Data aggregation methods</b>	<ul style="list-style-type: none"> <li>In reporting Exploration Results, weighting averaging techniques, maximum and/or minimum grade truncations (eg cutting of high grades) and cut-off grades are usually Material and should be stated.</li> <li>Where aggregate intercepts incorporate short lengths of high grade results and longer lengths of low grade results, the procedure used for such aggregation should be stated and some typical examples of such aggregations should be shown in detail.</li> <li>The assumptions used for any reporting of metal equivalent values should be clearly stated.</li> </ul>	<ul style="list-style-type: none"> <li>No top-cuts have been applied.</li> <li>No metal equivalent values are used for reporting exploration results.</li> </ul>
<b>Relationship between mineralisation widths and intercept lengths</b>	<ul style="list-style-type: none"> <li>These relationships are particularly important in the reporting of Exploration Results.</li> <li>If the geometry of the mineralisation with respect to the drill hole angle is known, its nature should be reported.</li> <li>If it is not known and only the down hole lengths are reported, there should be a clear statement to this effect (eg 'down hole length, true width not known').</li> </ul>	<ul style="list-style-type: none"> <li>True widths are generally estimated to be about 60% of the down-hole width.</li> </ul>
<b>Diagrams</b>	<ul style="list-style-type: none"> <li>Appropriate maps and sections (with scales) and tabulations of intercepts should be included for any significant discovery being reported These should include, but not be limited to a plan view of drill hole collar locations and appropriate sectional views.</li> </ul>	<ul style="list-style-type: none"> <li>See diagrams included.</li> </ul>
<b>Balanced reporting</b>	<ul style="list-style-type: none"> <li>Where comprehensive reporting of all Exploration Results is not practicable, representative reporting of both low and high grades and/or widths should be practiced to avoid misleading reporting of Exploration Results.</li> </ul>	<ul style="list-style-type: none"> <li>All results are reported.</li> </ul>
<b>Other substantive exploration data</b>	<ul style="list-style-type: none"> <li>Other exploration data, if meaningful and material, should be reported including (but not limited to): geological observations; geophysical survey results; geochemical survey results; bulk samples – size and method of treatment; metallurgical test results; bulk density, groundwater, geotechnical and rock characteristics; potential deleterious or contaminating substances.</li> </ul>	<ul style="list-style-type: none"> <li>See release details.</li> </ul>
<b>Further work</b>	<ul style="list-style-type: none"> <li>The nature and scale of planned further work (eg tests for lateral extensions or depth extensions or large-scale step-out drilling).</li> <li>Diagrams clearly highlighting the areas of possible extensions, including the main geological interpretations and future drilling areas, provided this information is not commercially sensitive.</li> </ul>	<ul style="list-style-type: none"> <li>Although not yet planned in detail, it is anticipated that further work will include infill, step out and twin-hole drilling. This work will be designed to improve confidence in, and test potential extensions to the current resource estimates.</li> </ul>