

BONANZA GOLD GRADES HIGHLIGHT UNTAPPED NORTHERN POTENTIAL AT APOLLO HILL

Exceptional new shallow intercepts up to 4m @ 70.03g/t Au returned 200m north of the 2.24Moz Mineral Resource¹, open up an exciting new dimension for exploration and resource growth potential.

HIGHLIGHTS

- Significant new shallow, high-grade drilling intersections returned at the northern end of the 2.24Moz Apollo Hill Deposit¹ include:
 - **4m @ 70.03g/t Au from 54m** including **1m @ 277g/t Au from 55m** – AHRC1581
 - **18m @ 2.63g/t Au from 5m** including **3m @ 13.57g/t Au from 5m** – AHRC1567
 - **1m @ 24.60g/t Au from 93m** – AHRCDD1532
- **Coarse visible gold** observed in panned RC drill chips associated with the bonanza grade intercept in AHRC1581 (Plate 1, page 2).
- Other significant intercepts reported previously by Saturn from these stacked mineralised trends at the northern end of Apollo Hill (Figure 1, page 3) include:
 - **5m @ 26g/t Au** from 52m including **2m @ 61.1g/t Au** from 52m – AA090²
 - **12m @ 9.98g/t Au** from 269m; and **36m @ 1.32g/t Au** from 183m including **11m @ 3.28g/t Au** from 208m; **13m @ 1.2g/t Au** from 301m including **4m @ 3.63g/t Au** from 301m – AHRC0312³
 - **8m @ 12.9g/t Au** from 126m within **14m @ 7.75g/t Au** from 120m, and; **5m @ 8.03g/t Au** from 111m – AHRC0330⁴
 - **2m @ 69.26g/t Au** from 146m – AAHD0010⁵
 - **7m @ 11.18g/t Au** from 172m including **3m @ 25.67g/t Au** from 172m; and **3m @ 17.62g/t Au** from 160m – AHRC0813⁶
- **Importantly, all of the results align with east-west trending mineralised zones, interpreted to repeat northwards from the Apollo Hill Mineral Resource** (Figure 1, page 3).
- **The bonanza 1m @ 277g/t Au intercept in AHRC1581 is the highest-grade assay ever recorded at Apollo Hill.**
- Given its alignment with other significant higher-grade intersections nearby, and the fact that the mineralisation remains open, this presents **an exciting new opportunity for exploration and resource growth at Apollo Hill.**
- **A 10,000m drill program is currently underway to follow up on these exciting new results, interpretations, and pattern recognition.** The program is being led by an initial 1,000m diamond drilling component to refine geological understanding, ahead of follow-up RC drilling. This program is separate, and in addition to other recently completed Mineral Resource upgrade drilling (next Mineral Resource upgrade scheduled for the second Quarter of 2026).

¹ Complete details of the Mineral Resource (137.1Mt @ 0.51g/t Au for 2,239,000oz Au) and the associated Competent Persons Statement were published in the ASX Announcement dated 18 July 2025 titled "Apollo Hill Gold Resource Increases to 2.24Moz; 82% Classified as Measure and Indicated". Saturn reports that it is not aware of any new information or data that materially affects the information included in that Mineral Resource announcement and that all material assumptions and technical parameters underpinning the estimates in the relevant market announcement continue to apply and there have been no adverse material changes.

² Historical drillhole reported in Saturn Metals Prospectus dated 10 January 2018.

³ ASX Announcement 14 January 2020.

⁴ ASX Announcement 19 February 2020.

⁵ Historical drillhole reported in Saturn Metals Prospectus dated 10 January 2018.

⁶ ASX Announcement 28 October 2021.



Plate 1 — AHRC1581 Drill Spoil Gold Pan — 1m @ 277g/t Au — 55-56m — Coarse visible gold present throughout the pan.



Figure 1 – 3D Oblique view of significant new results at the northern end of Apollo Hill, geological interpretations of new results and developing Resource and exploration picture.

Saturn Metals Limited (ASX: **STN**) (“**Saturn**” or “**the Company**”) is pleased to report **exceptional high-grade assay results** from ongoing extensional resource development drilling at its flagship 100%-owned Apollo Hill Gold Project, located near Leonora in Western Australia.

The new drill results – combined with ongoing geological interpretation for Saturn’s current Mineral Resource upgrade process and previously reported high-grade results – have shed new light on the northern extensional potential of the Apollo Hill gold deposit.

Figure 1 illustrates how the new intersections align with previously reported high-grade results along a series of parallel and repeating, interpreted geological trends.

Geological modelling for the current Mineral Resource upgrade at Apollo Hill has also highlighted the importance of these trends and repeating structures within the deposit (Figure 1).

Figure 2 shows new results on a simplified interpretative geological cross-section. The mineralisation remains open down-dip.

Significant intersections are generally associated with more defined (tighter) geological structures and quartz veining in typical goldfields basalts and dolerite rock types as illustrated in Plate 2 and Figure 2.

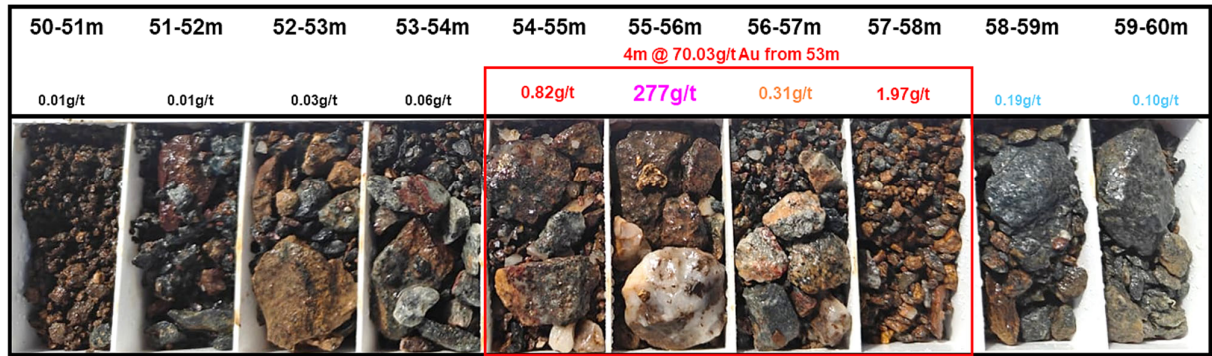


Plate 2 — AHRC1581 Chip Tray – 1m @ 277g/t Au – 55-56m – Visible gold present in the 1m interval 55-56m, visible gold seen in the chip tray has been sieved or panned and preserved in the chip tray for geological record. From 54m-to 58m, geological structure is highlighted by increased colouration and quartz veining. Lower grade gold and mineral alteration are exhibited within a mineral alteration halo from 52m to 60m down-hole.

Other significant results from this recent batch of assays which are accretive to Saturn’s Apollo Hill bulk mining and heap leach resource strategy include: (illustrated in Plan View in Appendix 3)

- **5m @ 3.83g/t Au** from 330m within **31m @ 1.09g/t Au** from 304m – AHRC1567
- **4m @ 3.10g/t Au** from 365m within **15m @ 0.81g/t Au** from 292m – AHRC1611
- **3m @ 6.02g/t Au** from 217m within **11m @ 1.81g/t Au** from 209m – AHRC1587

This announcement reports results from 31 drill-holes for 5,972m. All significant intersections are reported in Appendix 1. Reported drill-hole details are listed in Appendix 2.

Appendix 3 shows reported drill holes and results in plan view.

These results will contribute towards Saturn’s next Mineral Resource update (second quarter, 2026), the Definitive Feasibility Study (DFS) currently in progress, and an updated Ore Reserve both scheduled for completion in CY 2026.

Assays are pending for a total of 81 Reverse Circulation and seven diamond drill-holes for approximately 13,400m from the recently completed Mineral Resource upgrade drilling program. These holes are illustrated as Green drill holes traces in Figure 1 and as cross marks in plan view in Appendix 3.

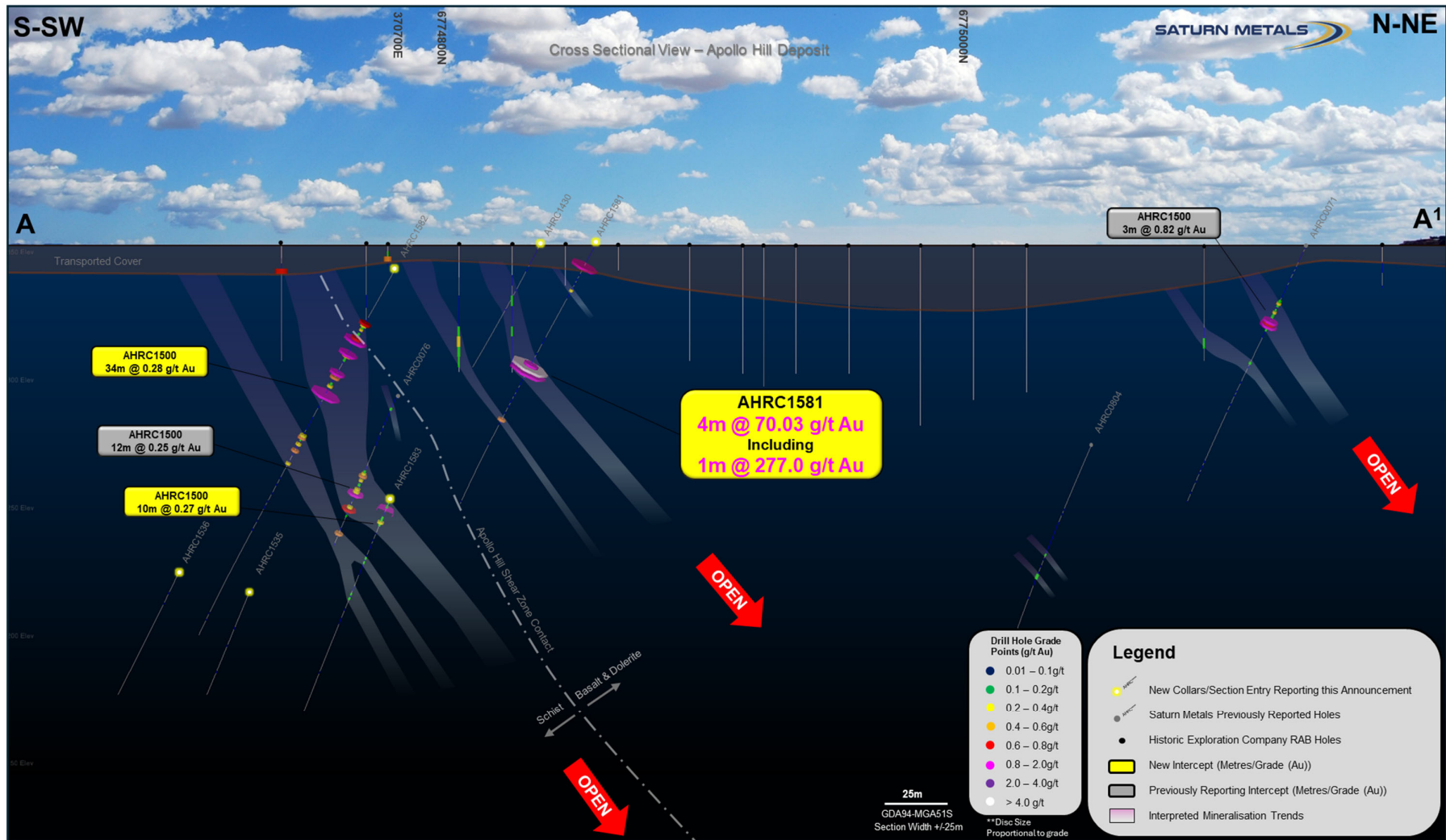


Figure 2 – Simplified Geological Cross Section – new results and intersections – Apollo Hill North.

Saturn's Managing Director, Ian Bamborough, said:

"We are very encouraged to see our extensive 2025 drilling and geological work translating directly into high-impact exploration success in early 2026.

"Our growing understanding of the Apollo Hill system has effectively opened up a new frontier for further discovery and resource growth immediately to the north of Apollo Hill.

"The high-grade assays from these newly interpreted trends add an exciting new dimension to the deposit and highlight the significant upside potential for future resource growth.

With a 31 December reported cash position of \$58.6 million, and next stage drill programs underway, Saturn is well funded to continue its exploration journey whilst it completes the Apollo Hill Definitive Feasibility Study scheduled for release later in CY2026.

"We look forward to reporting further assay results in the coming weeks, with results pending from 88 drill holes across the deposit, including resource upgrade drilling and in-fill and extensional drilling at the Titan Zone."

This announcement has been approved for release by the Saturn Metals Limited Board of Directors.



IAN BAMBOROUGH
Managing Director

For further information please contact:

Investors & Corporate:

Ian Bamborough
Managing Director
T: +61 (0)8 6234 1114
E: info@saturnmetals.com.au

Media Inquiries:

Nicholas Read
Read Corporate
T: +61 (0)8 9388 1474
E: nicholas@readcorporate.com.au

Competent Persons Statement:

The information in this report that relates to exploration results is based on information compiled and/or reviewed by David Smith, a Competent Person who is a Member of The Australian Institute of Geoscientists. Mr Smith is a full-time employee of the Company, in addition to being a shareholder of the Company. Mr Smith has sufficient experience that is relevant to the style of mineralisation and type of deposit under consideration and to the activity being undertaken to qualify as a Competent Person as defined in the 2012 Edition of the 'Australasian Code for Reporting of Exploration Results, Mineral Resources and Ore Reserves'. Mr Smith consents to the inclusion in the report of the matters based on his information in the form and context in which it appears

Appendix 1:

Significant RC & DD Results Reported in this Announcement

Hole Number	Down Hole Width (m)	Grade (g/t Au)	From (m)
AHRC1429	1	0.23	95
AHRC1430	NSI		
AHRC1464	5	0.31	48
AHRC1485	7	0.33	3
AHRC1501	6	1.11	43
AHRC1502	3	0.75	104
AHRC1503	1	0.99	128
AHRC1504	1	0.58	48
AHRC1505	45	0.33	31
incl.	4	1.52	48
AHRC1506	1	0.32	31
AHRC1507	4	0.23	14
	1	1.05	83
AHRC1508	1	0.20	81
AHRC1509	1	1.02	38
AHRC1510	11	0.28	19
AHRC1514	26	0.28	48
	36	0.27	110
incl.	3	1.25	125
	52	0.30	163
incl.	9	0.70	166
AHRC1519	2	1.07	192
AHRC1535	11	0.24	12
AHRC1536	1	1.13	25
	4	0.40	37
AHRC1537	5	0.50	49
	2	1.09	62
AHRC1538	6	0.80	32
	1	0.99	59
AHRC1539	1	1.17	58
AHRC1540	1	0.80	102
AHRC1567	18	2.63	5
incl.	3	13.57	5
	28	0.74	165
incl.	31	1.09	304
	5	3.83	330

Hole Number	Down Hole Width (m)	Grade (g/t Au)	From (m)
AHRC1569	9	0.51	25
	1	1.19	72
	12	0.21	109
AHRC1581	1	1.44	9
	4	70.03	54
	incl. 1	277.00	55
AHRC1582	34	0.28	36
AHRC1583	2	0.86	119
AHRC1587	incl. 11	1.81	209
	3	6.02	217
	2	0.89	251
	2	1.08	262
	2	1.15	287
AHRC1611	21	0.38	105
	17	0.42	246
	7	1.17	276
	15	0.81	292
	4	3.10	365
AHRC1612	1	1.22	190
	1	0.84	224
	11	0.32	263
AHRCDD1532	1	24.60	93
AHRCDD1406	NSI		

All results reported as interpreted for a bulk mining style heap leach operation – See STN announcement ‘Positive Apollo Hill Pre-Feasibility Study and Maiden Ore Reserve’ – December 17th, 2025, for further details.

Appendix 2:

Completed and Reported RC & DD Holes

Hole Number	Easting GDA94-Z51	Northing GDA94-Z51	RL (m)	Dip°	Azi°	Depth (m)
AHRC1429	370677	6774815	353	-60	220	228
AHRC1430	370699	6774840	353	-60	220	210
AHRC1464	371101	6774543	373	-60	222	80
AHRC1485	370929	6774401	357	-60	220	282
AHRC1501	370814	6774609	356	-60	220	150
AHRC1502	370858	6774630	357	-60	220	204
AHRC1503	370816	6774685	355	-60	220	204
AHRC1504	370838	6774707	355	-60	220	210
AHRC1505	370855	6774728	355	-60	220	204
AHRC1506	370983	6774702	359	-60	225	48
AHRC1507	371001	6774717	359	-60	225	84
AHRC1508	371001	6774697	360	-60	225	102
AHRC1509	371000	6774681	362	-60	225	42
AHRC1510	371021	6774693	361	-60	225	84
AHRC1514	371244	6774468	381	-51	224	252
AHRC1519	370696	6774600	355	-60	220	228
AHRC1535	370771	6774773	353	-60	220	204
AHRC1536	370752	6774752	353	-60	220	204
AHRC1537	370788	6774793	353	-60	220	204
AHRC1538	371302	6774949	352	-60	265	156
AHRC1539	371334	6774952	352	-60	265	156
AHRC1540	371367	6774951	352	-60	265	174
AHRC1567	371332	6774602	362	-64	215	372
AHRC1569	371530	6774544	353	-60	220	204
AHRC1581	370719	6774858	352	-60	220	210
AHRC1582	370728	6774782	353	-60	220	204
AHRC1583	370764	6774817	353	-60	220	210
AHRC1587	371232	6774460	381	-80	225	320
AHRC1611	371213	6774624	371	-60	213	378
AHRC1612	371268	6774626	367	-60	215	286
AHRCDD1406	371059	6775006	352	-60	220	250
AHRCDD1532	371075	6774943	353	-60	220	206.2

Appendix 3:

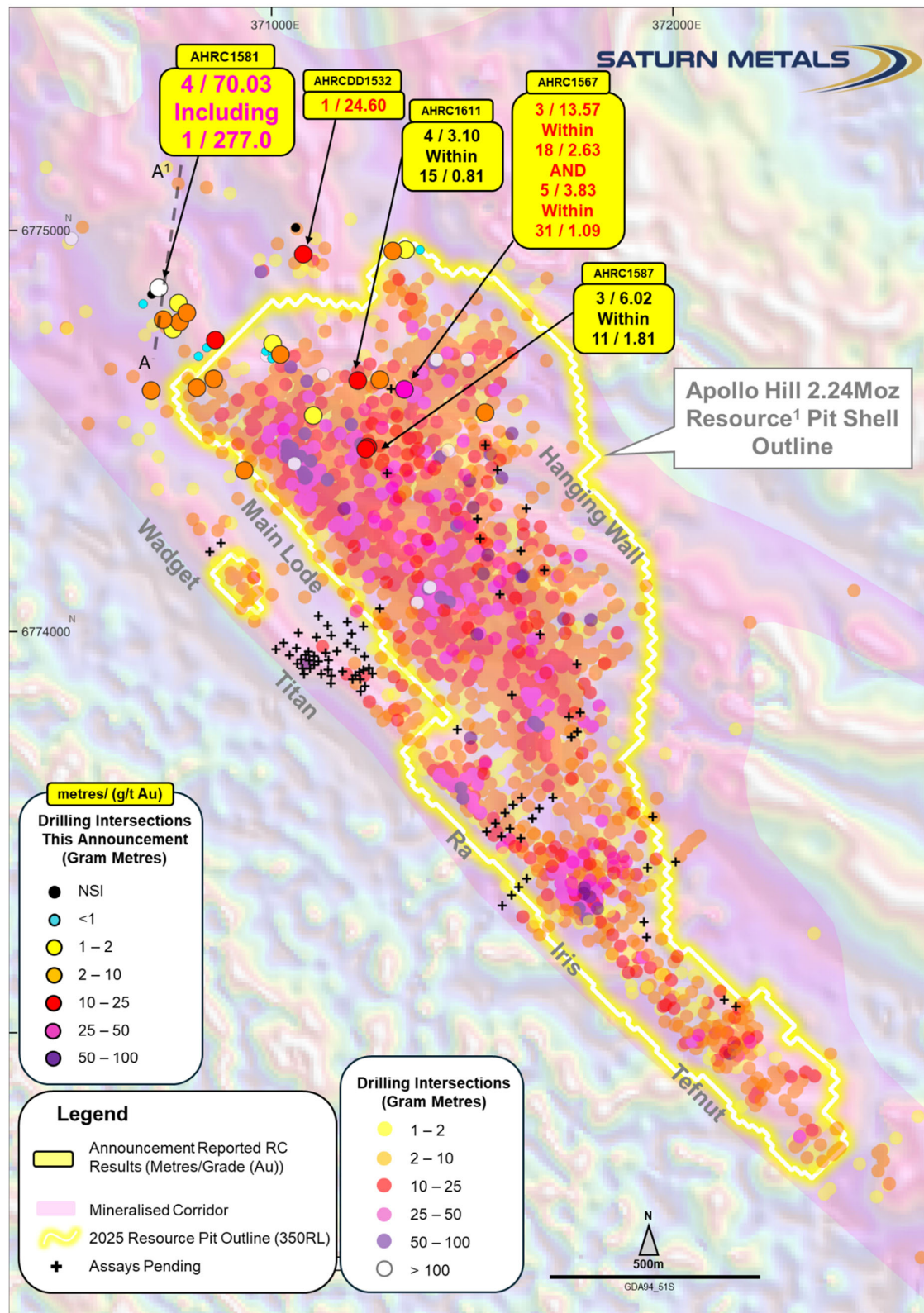


Figure 3 – Plan Overview, Apollo Hill RC & DD Holes. Previously reported holes >1 Gram Metre (g/t Au x Metres) with all holes reported in this announcement illustrated. February 2025 2.24Moz Apollo Hill Mineral Resource¹ Pit Shell Outline seen at 350RL (Average Surface RL); Figure 3 long-section illustrated as line A-A¹ on this diagram. Saturn’s Reduction-to-the-Pole (RTP), Tilt Derivative (TILT), and Linear Feature Analysis Aeromagnetic data as background image.

Appendix 4:

Apollo Hill Deposit – Mineral Resources

Mineral Resource Classification	Oxidation	Tonnes (Mt)	Au (g/t)	Au metal (Kozs)
Measured	Oxide	0.04	0.70	1
	Transitional	1.3	0.57	24
	Fresh	3.5	0.52	59
Subtotal		4.8	0.54	83
Indicated	Oxide	0.7	0.51	11
	Transitional	7.1	0.50	113
	Fresh	99.7	0.51	1629
Subtotal		107.4	0.51	1,753
Inferred	Oxide	0.1	0.50	1
	Transitional	0.9	0.49	15
	Fresh	23.8	0.51	387
Subtotal		24.8	0.51	403
Grand Total		137.1	0.51	2,239

Complete details of the Mineral Resource (137.1Mt @ 0.51g/t Au for 2,239,000oz Au) and the associated Competent Persons Statement were published in the ASX Announcement dated 18 July 2025 titled "Apollo Hill Gold Resource Increases to 2.24Moz; 82% Classified as Measure and Indicated". Saturn reports that it is not aware of any new information or data that materially affects the information included in that Mineral Resource announcement and that all material assumptions and technical parameters underpinning the estimates in the relevant market announcement continue to apply and there have been no adverse material changes.

Appendix 5:

Apollo Hill Deposit – Ore Reserves

Mineral Reserve Classification	Oxidation	Tonnes (Mt)	Au (g/t)	Au Metal (koz)
Proven	Oxide	0.0	0.56	0
	Transitional	1.4	0.54	24
	Fresh	3.4	0.49	54
Subtotal		4.8	0.51	78
Probable	Oxide	0.6	0.50	9
	Transitional	7.4	0.45	108
	Fresh	91.9	0.47	1,391
Subtotal		99.8	0.47	1,508
Grand Total		104.6	0.47	1,586

Complete details of the Ore Reserve (104.6Mt @ 0.47g/t Au for 1,586,000oz Au) and the associated Competent Persons Statement were published in the ASX Announcement dated 17 December 2025 titled "Apollo Hill Pre-Feasibility Study and Maiden Ore Reserve". Saturn reports that it is not aware of any new information or data that materially affects the information included in that announcement and that all material assumptions and technical parameters underpinning the estimates in the relevant market announcement continue to apply and there have been no adverse material changes.

Appendix 6:

Saturn Metals Project Areas

Apollo Hill (29.15°S and 121.68°E) is located approximately 60km south-east of Leonora in the heart of WA's goldfields region (Figure 4). The deposit and the Apollo Hill project are 100% owned by Saturn and are surrounded by good infrastructure and several significant gold deposits. The Apollo Hill Project has the potential to become a large tonnage, simple metallurgy, low strip open pit mining operation.

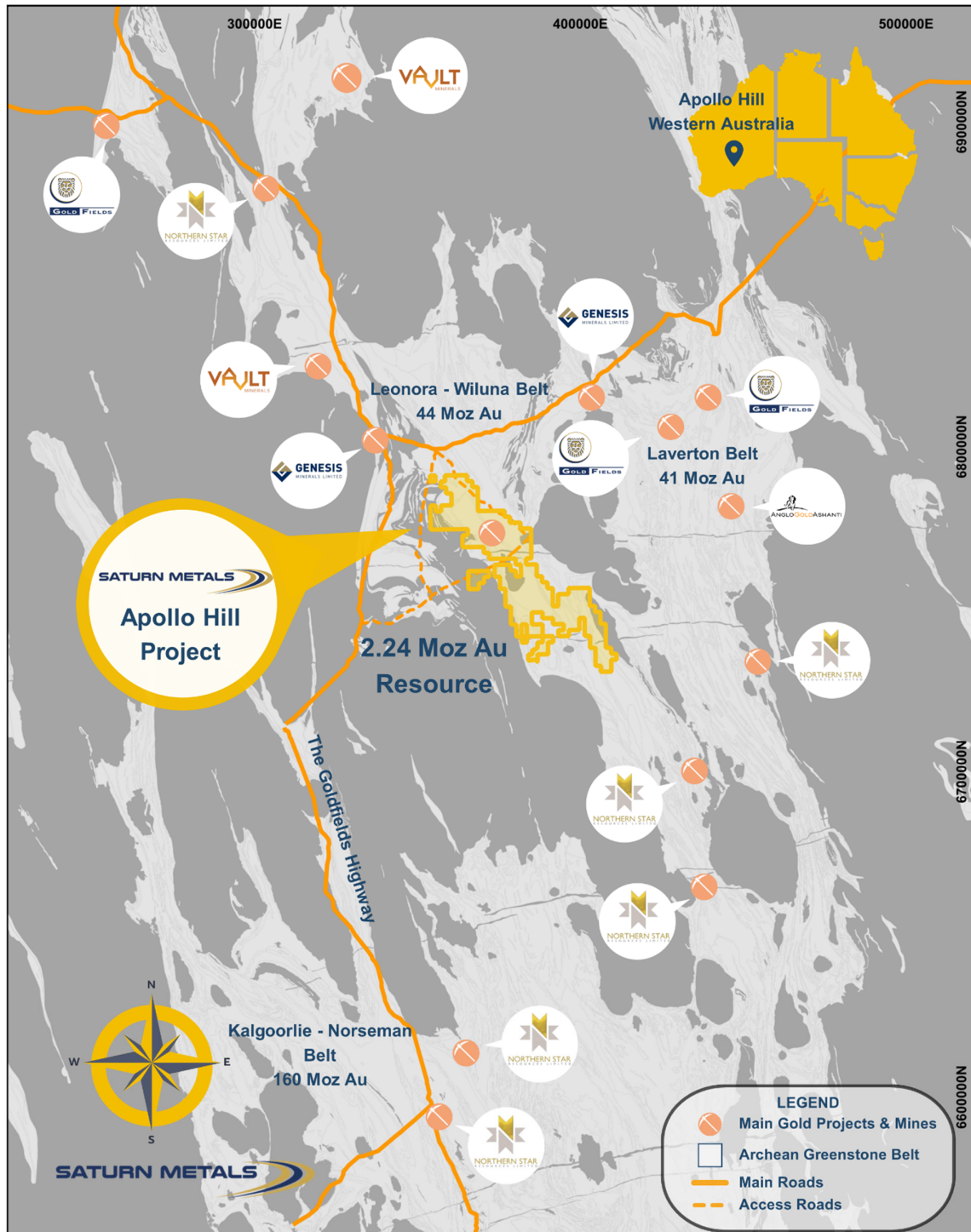


Figure 4 – Apollo Hill location, Saturn Metals' tenements and surrounding gold deposits, gold endowment and infrastructure.

In addition, Saturn has a second quality gold exploration project in Australia. The Company has an option to earn an 85% joint venture interest in the West Wyalong Project (Figure 5), which represents a high-grade vein opportunity on the highly gold prospective Gilmore suture within the famous Lachlan Fold belt of NSW.

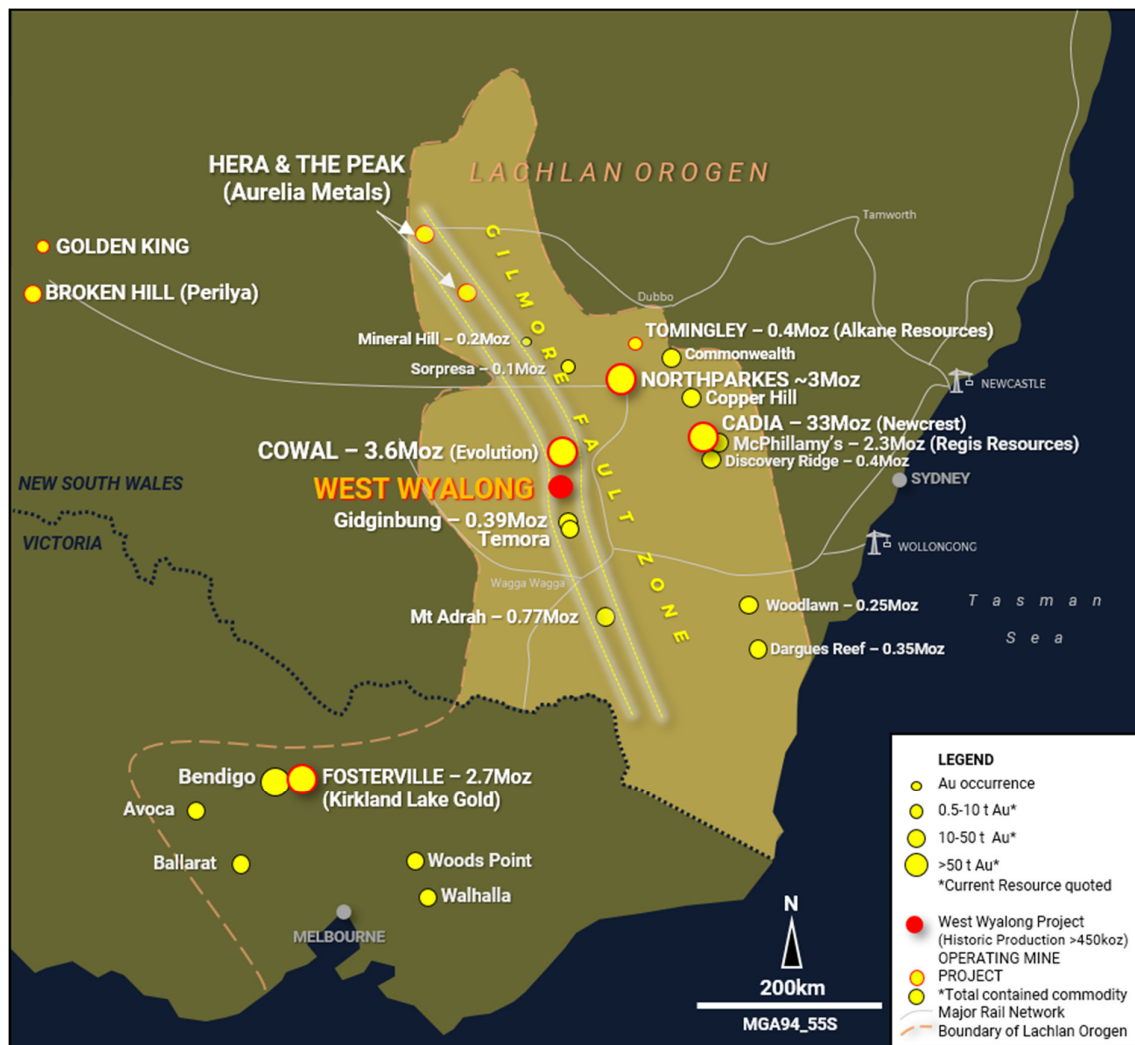


Figure 5 – Regional setting and location of the West Wyalong Gold Project in relation to other gold projects in New South Wales and Victoria (map taken from Saturn ASX announcement on 28 April 2020 where full references are provided).

Appendix 6:

JORC Code, 2012 Edition – Table 1 – Apollo Hill Exploration Area

Section 1 Sampling Techniques and Data

(Criteria in this section apply to the Apollo Hill, Apollo Hill Regional, Apollo Hill Hanging-wall and Iris zone exploration areas all succeeding sections).

Table II Extract of JORC Code 2012 Table 1

Criteria	JORC Code Explanation	Commentary
Sampling techniques	<p>Nature and quality of sampling (e.g. cut channels, random chips, or specific specialised industry standard measurement tools appropriate to the minerals under investigation, such as down hole gamma sondes, or handheld XRF instruments, etc.). These examples should not be taken as limiting the broad meaning of sampling.</p> <p>Include reference to measures taken to ensure sample representivity and the appropriate calibration of any measurement tools or systems used.</p> <p>Aspects of the determination of mineralisation that are Material to the Public Report.</p> <p>In cases where 'industry standard' work has been done this would be relatively simple (e.g. 'reverse circulation drilling was used to obtain 1m samples from which 3 kg was pulverised to produce a 30 g charge for fire assay'). In other cases more explanation may be required, such as where there is coarse gold that has inherent sampling problems. Unusual commodities or mineralisation types (e.g. submarine nodules) may warrant disclosure of detailed information.</p>	<p>Measures taken to ensure the representivity of RC sampling include close supervision by geologists, use of appropriate sub-sampling methods, routine cleaning of splitters and cyclones, and RC rigs with sufficient capacity to provide generally dry, reasonable recovery samples. Information available to demonstrate sample representivity includes RC sample weights, sample recovery, sample consistency, field duplicates, standards and blanks.</p> <p>RC holes were sampled over 1 m intervals using a cone-splitter mounted to the RC drill rig. RC samples were analysed by Bureau Veritas in Kalgoorlie. At the laboratory the samples were oven dried and crushed to 90% passing 2 mm, and pulverized to 95% passing 106 microns, with analysis by a 40 g or 50 g fire assay.</p> <p>RC samples were generally taken at 1m intervals. Historically some samples were composited to 4 m to produce a 3 kg representative sample to be submitted to the laboratory. If the 4 m composite sample was anomalous (Au>0.16 g/t), the original 1 m samples were retrieved and submitted to the laboratory. In general, the expected mineralised zones are all sampled using 1 m intervals.</p> <p>Sampling was undertaken using STN sampling and QAQC procedures in line with industry best practice, which includes the submission of standards, blanks and duplicates at regular intervals within each submission, for RC samples.</p> <p>All samples collected are recorded in the Company's Database.</p>
Drilling techniques	<p>Drill type (e.g. core, reverse circulation, open-hole hammer, rotary air blast, auger, Bangka, sonic, etc.) and details (e.g. core diameter, triple or standard tube, depth of diamond tails, face-sampling bit or other type, whether core is oriented and if so, by what method, etc.).</p>	<p>RC drilling used a 4.4-inch or 5.5-inch face-sampling bit.</p> <p>All RC holes were surveyed by Gyro, every 30 m down hole.</p>
Drill sample recovery	<p>Method of recording and assessing core and chip sample recoveries and results assessed.</p> <p>Measures taken to maximise sample recovery and ensure representative nature of the samples.</p> <p>Whether a relationship exists between sample recovery and grade and whether sample bias may have occurred due to preferential loss/gain of fine/coarse material.</p>	<p>RC sample recovery was visually estimated by volume for each 1 m bulk sample bag and recorded digitally in the sample database. Very little variation was observed.</p> <p>Measures taken to maximize recovery for RC drilling included use of face sampling bits and drilling rigs of sufficient capacity to provide generally dry, high recovery samples.</p> <p>RC sample weights indicate an average recovery of 85% to 95% and were dry.</p> <p>The cone splitter was regularly cleaned with compressed air at the completion of each rod.</p> <p>The RC Drilling was completed using auxiliary compressors and boosters to keep the hole dry and ensure the sample was lifted to the sampling equipment as efficiently as possible.</p> <p>The cyclone and cone splitter were kept dry and clean, with the cyclone cleaned after each drillhole, and the splitter cleaned after each rod to minimize down-hole or cross-hole contamination.</p> <p>The 2.5-3 kg calico bag samples representing 1 m were taken directly from the cyclone and packaged for</p>

Criteria	JORC Code Explanation	Commentary
		freight to Kalgoorlie. The calico represents both fine and coarse material from the drill rig.
Logging	<p>Whether core and chip samples have been geologically and geotechnically logged to a level of detail to support appropriate Mineral Resource estimation, mining studies and metallurgical studies.</p> <p>Whether logging is qualitative or quantitative in nature. Core (or costean, channel, etc.) photography.</p> <p>The total length and percentage of the relevant intersections logged.</p>	<p>All holes in the current program have been geologically logged to a high level of detail to support the definition of geological domains appropriate to support Mineral Resource estimation and classification.</p> <p>All geologists logging drilling have been trained how to log to a high level of detail through their university studies as well as by supervising geologists experienced in the geology of the region.</p> <p>Representative rock chips from every metre were collected in chip trays and logged by the geologist at the drill site.</p> <p>Lithology, weathering (oxidation state), veining, mineralisation and alteration are recorded in detail using standard digital logging sheets and defined look-up tables to ensure that all data are collected in a consistent manner. Reference cards aided the logging of sulphides, which along with the experience of logging geologists, ensure sulphide estimates are reliable and reproduceable.</p> <p>Logging data are entered using Toughbook computers. All data are validated by the logging geologist before being entered into an SQL database.</p>
Sub-sampling techniques and sample preparation	<p>If core, whether cut or sawn and whether quarter, half or all core taken.</p> <p>If non-core, whether riffled, tube sampled, rotary split, etc. and whether sampled wet or dry.</p> <p>For all sample types, the nature, quality and appropriateness of the sample preparation technique.</p> <p>Quality control procedures adopted for all sub-sampling stages to maximise representivity of samples.</p> <p>Measures taken to ensure that the sampling is representative of the in-situ material collected, including for instance results for field duplicate/second-half sampling.</p> <p>Whether sample sizes are appropriate to the grain size of the material being sampled.</p>	<p>RC holes were sampled over 1 m intervals by cone-splitting. RC sampling was closely supervised by field geologists and included appropriate sampling methods, routine cleaning of splitters and cyclones, and rigs with sufficient capacity to provide generally dry, high recovery RC samples. Sample quality monitoring included weighing RC samples and field duplicates.</p> <p>Assay samples were crushed to 90% passing 2 mm. A 3kg split sub sample was then pulverised to 85% passing 75 microns using an LM5 pulverising mill, with analysis by 40 g or 50 g fire assay with AAS finish. Assay quality monitoring included reference standards and inter-laboratory checks assays.</p> <p>Duplicate samples were collected every 40 samples, and certified reference material and blank material were inserted every 25 samples.</p> <p>The available data suggests that sampling procedures provide sufficiently representative sub-samples for the current interpretation.</p>
Quality of assay data and laboratory tests	<p>The nature, quality and appropriateness of the assaying and laboratory procedures used and whether the technique is considered partial or total.</p> <p>For geophysical tools, spectrometres, handheld XRF instruments, etc., the parameters used in determining the analysis including instrument make and model, reading times, calibrations factors applied and their derivation, etc.</p> <p>Nature of quality control procedures adopted (e.g. standards, blanks, duplicates, external laboratory checks) and whether acceptable levels of accuracy (i.e. lack of bias) and precision have been established.</p>	<p>Field quality control procedures adopted comprised of entering a sequence of matrix-matched commercially available certified reference materials (CRMs), and blanks into the sample run at a frequency of approximately 1 in 25 or 1 in 50 samples. Field duplicates were collected at a frequency of approximately 1 in 40 samples.</p> <p>Gold CRMs have been sourced from Geostats Pty Ltd and are used to check accuracy and bias of the analytical method. The certified values have ranged between 0.18 g/t Au and 2.38 g/t Au.</p> <p>Washed quartz sand was utilised as blank material.</p> <p>QAQC samples were monitored on a batch-by-batch basis. An assay batch is accepted if the blank samples and standards are within the + 3SD (standard deviations). One failed standard can cause rejection if the results around the failed standard are not in the normal grade range. A batch is also re-assayed when assay results from two or more standards are outside the acceptable limits. The inserted blank materials did not show any consistent issues with sample contamination.</p> <p>Review of CRMs and blanks suggest that an acceptable level of accuracy (lack of bias) has been established.</p>

Criteria	JORC Code Explanation	Commentary
		<p>The performance of field duplicates in RC samples is generally reasonable and the variations are related to the style of mineralisation.</p> <p>Internal laboratory checks are conducted, including insertion of CRMs, blanks and conducting laboratory duplicates. Review of the internal laboratory QAQC checks suggests the laboratory is performing within acceptable limits.</p> <p>Inter-laboratory checks are completed at a rate of 5% of all samples, re-testing the pulps (remains of the pulverised sample) at a different laboratory to the original analysis</p>
<p>Verification of sampling and assaying</p>	<p>The verification of significant intersections by either independent or alternative company personnel.</p> <p>The use of twinned holes.</p> <p>Documentation of primary data, data entry procedures, data verification, data storage (physical and electronic) protocols.</p> <p>Discuss any adjustment to assay data.</p>	<p>No independent geologists were engaged to verify results. Saturn's geologists were supervised by the company's Exploration Manager, or delegate.</p> <p>High standard QAQC procedures are in place. Therefore, repeatability issues from a QAQC point of view are not considered to be significant.</p> <p>Significant and/or unexpected intersections were reviewed by other company personnel through review of geological logging data, physical examination of remaining samples and review of digital geological interpretations.</p> <p>All assay data were accepted into the database as supplied by the laboratory.</p> <p>Data importation into the database is documented through standard operating procedures and is guided by SQL import validations to prevent incorrect data capture/importation.</p> <p>Geological, structural and density determination data are directly captured in the database through a validation-controlled interface using Toughbook computers and SQL database import validations.</p> <p>Primary data are stored in their source electronic form. Assay data are retained in both the original certificate (.pdf) form and the excel files received from the laboratory. Data entry, validation and storage are discussed in the section on database integrity below.</p> <p>The database contains several RC and diamond core holes that are sufficiently close to be used to prepare twinned datasets. Twinned data comparisons indicated similar characteristics in terms of grade tenor and intercept thicknesses, with generally no significant issues identified.</p> <p>No adjustments to assay data were undertaken.</p>
<p>Location of data points</p>	<p>Accuracy and quality of surveys used to locate drillholes (collar and down-hole surveys), trenches, mine workings and other locations used in Mineral Resource estimation.</p> <p>Specification of the grid system used.</p> <p>Quality and adequacy of topographic control.</p>	<p>Collars are initially surveyed by hand-held GPS, utilising GDA94, Zone 51.</p> <p>Final drillhole collars are all surveyed by DGPS by an external contractor - Goldfield Surveyor. No adjustments were undertaken of DGPS data.</p> <p>All RC were down-hole surveyed using a gyroscopic survey tool.</p> <p>A topographic triangulation 3D DXF was generated by PhotoSat from 50cm pixel resolution WorldView-2 satellite photos, the survey utilises 925 control points (Surveyed drill hole collar points). The survey projects vertical accuracy is 43 cm RMSE; 72 cm LE90.</p>
<p>Data spacing and distribution</p>	<p>Data spacing for reporting of Exploration Results.</p> <p>Whether the data spacing and distribution is sufficient to establish the degree of geological and grade continuity appropriate for the Mineral Resource and Ore Reserve estimation procedure(s) and classifications applied.</p> <p>Whether sample compositing has been applied.</p>	<p>Apollo Hill mineralisation has been tested by generally 30 m spaced traverses of south- westerly inclined drillholes towards 225°. Across strike spacing is variable. Material within approximately 50 m of surface has been generally tested by 12.5 m to 30 m spaced holes, with deeper drilling ranging from 30 m to greater than 60 m spacing.</p> <p>The data spacing is sufficient to establish geological and grade continuity</p>
<p>Orientation of data in relation</p>	<p>Whether the orientation of sampling achieves unbiased sampling of possible structures and the</p>	<p>Mineralised zones dip at an average of around 30° to 60° towards the northeast. Detailed orientations of all short-scale mineralised features have not yet been</p>

Criteria	JORC Code Explanation	Commentary
to geological structure	extent to which this is known, considering the deposit type. If the relationship between the drilling orientation and the orientation of key mineralised structures is considered to have introduced a sampling bias, this should be assessed and reported if material.	confidently established. The majority of the drillholes were inclined at around 60° to the southwest. No bias is assumed from the samples due to the orientation of samples.
Sample security	The measures taken to ensure sample security.	Apollo Hill is in an isolated area, with little access to the general public. All drill samples are systematically numbered and placed in pre-printed (numbered) calico bags and placed into numbered polyweave bags that were tied securely with cable ties. Assay samples were stored at a dispatch area and dispatched weekly or bi-weekly. Samples were shipped via a local logistics company directly to laboratories in Kalgoorlie. The sample dispatches were accompanied by supporting sample submission documentation signed by the geologist and showing the sample submission number, analysis suite and number of samples. The chain of custody is maintained by the laboratories once the samples are received from site and a full audit is conducted. Assay results are emailed to the responsible geology administrators in Perth and are loaded into the SQL database by Saturn's database managers. QAQC on import is completed as a batch summary report before the results are finalised.
Audits or reviews	The results of any audits or reviews of sampling techniques and data.	The Competent Person independently reviewed STN sample quality information and database validity. These reviews included consistency checks within and between database tables and comparison of assay entries with original source records for STN's drilling. These reviews showed no material discrepancies. The Competent Person considers that the Apollo Hill drilling data has been sufficiently verified to provide an adequate basis for the current reporting of exploration results.

Section 2 Reporting of Exploration Results

(Criteria listed in the preceding section also apply to this section).

Criteria	JORC Code Explanation	Commentary
Mineral tenement and land tenure status	Type, reference name/number, location and ownership including agreements or material issues with third parties such as joint ventures, partnerships, overriding royalties, native title interests, historical sites, wilderness or national park and environmental settings. The security of the tenure held at the time of reporting along with any known impediments to obtaining a licence to operate in the area.	The Apollo Hill Project lies within Exploration License E39/1198, M31/486 and M39/296. These tenements are wholly owned by Saturn Metals Limited. These tenements, along with certain other tenure, are the subject of a 5% gross over-riding royalty (payable to HHM) on Apollo Hill gold production exceeding 1 Moz. M39/296 is the subject of a \$1/t royalty (payable to a group of parties) on any production. The tenements are in good standing, and no known impediments exist.
Exploration done by other parties	Acknowledgment and appraisal of exploration by other parties.	RC and diamond drilling by previous tenement holders, At Apollo Hill, provides around 13.5% of the estimation dataset. The data is primarily from RC and diamond drilling by Battle Mountain, Apex Minerals, Fimiston Mining, Hampton Hill, Homestake, MPI and Peel Mining.
Geology	Deposit type, geological setting, and style of mineralisation.	The Apollo Hill project comprises two deposits/trends: the main Apollo Hill deposit comprised of the 'Main lode' and 'Hanging Wall' Lodes in the northwest of the project area, and the Southern Apollo Hill Corridor trend, comprised of the Wadget-Ra-Iris-Tefnut lodes in the south. Gold mineralisation is associated with quartz veins and carbonate-pyrite alteration along a steeply north-east dipping contact between a schist unit to the west, and mafic dominated volcanic and intrusive rocks to the east. The combined mineralised

Criteria	JORC Code Explanation	Commentary
		<p>zones extend over a strike length of approximately 3 km and have been intersected by drilling to approximately 500 m vertical depth.</p> <p>The depth of complete oxidation averages around 4 m with depth to fresh rock averaging around 21 m.</p>
Drillhole Information	<p>A summary of all information material to the understanding of the exploration results including a tabulation of the following information for all Material drillholes:</p> <ul style="list-style-type: none"> • easting and northing of the drillhole collar • elevation or RL (Reduced Level – elevation above sea level in metres) of the drillhole collar • dip and azimuth of the hole. • down hole length and interception depth • hole length. <p>If the exclusion of this information is justified on the basis that the information is not Material and this exclusion does not detract from the understanding of the report, the Competent Person should clearly explain why this is the case.</p>	<p>Any relevant information material to the understanding of exploration results has been included within the body of the announcement or as appendices.</p> <p>No information has been excluded.</p>
Data aggregation methods	<p>In reporting Exploration Results, weighting averaging techniques, maximum and/or minimum grade truncations (eg. cutting of high grades) and cut-off grades are usually Material and should be stated.</p> <p>Where aggregate intercepts incorporate short lengths of high-grade results and longer lengths of low-grade results, the procedure used for such aggregation should be stated and some typical examples of such aggregations should be shown in detail.</p> <p>The assumptions used for any reporting of metal equivalent values should be clearly stated.</p>	<p>For exploration data, no top-cuts have been applied.</p> <p>All reported AC, RC and diamond drill assay results have been length weighted (arithmetic length weighting).</p> <p>No metal equivalent values are used for reporting exploration results.</p>
Relationship between mineralisation widths and intercept lengths	<p>These relationships are particularly important in the reporting of Exploration Results.</p> <p>If the geometry of the mineralisation with respect to the drillhole angle is known, its nature should be reported.</p> <p>If it is not known and only the down hole lengths are reported, there should be a clear statement to this effect (eg. 'down hole length, true width not known').</p>	<p>All drillhole intercepts are measured in downhole metres, with true widths estimated to be about 60 % of the down-hole width.</p> <p>The orientation of the drilling has the potential to introduce some sampling bias (positive or negative).</p>
Diagrams	<p>Appropriate maps and sections (with scales) and tabulations of intercepts should be included for any significant discovery being reported. These should include, but not be limited to a plan view of drillhole collar locations and appropriate sectional views.</p>	<p>Refer to Figures and Tables within the body of the text.</p>
Balanced reporting	<p>Where comprehensive reporting of all Exploration Results is not practicable, representative reporting of both low and high grades and/or widths should be practiced to avoid misleading reporting of Exploration Results.</p>	<p>For any exploration results, all results are reported, no lower cut-off or top-cuts have been applied.</p>
Other substantive exploration data	<p>Other exploration data, if meaningful and material, should be reported including (but not limited to): geological observations; geophysical survey results; geochemical survey results; bulk samples – size and method of treatment; metallurgical test results; bulk density, groundwater, geotechnical and rock characteristics; potential deleterious or contaminating substances.</p>	<p>At this stage there are no substantive other exploration data from the recent drilling that is meaningful and material to report.</p>
Further work	<p>The nature and scale of planned further work (e.g. tests for lateral extensions or depth extensions or large-scale step-out drilling).</p> <p>Diagrams clearly highlighting the areas of possible extensions, including the main geological interpretations and future drilling areas, provided this information is not commercially sensitive.</p>	<p>Additional RC drilling is scheduled for the remainder of calendar year 2025 to support the development studies of the Apollo Hill Project.</p> <p>In addition, AC drilling will be conducted over areas designated for infrastructure to assess the underlying ground for gold anomalies before placing non-movable infrastructure. This will further support the advancement of the Apollo Hill Project.</p> <p>Further metallurgical diamond drilling is planned to continue as the project develops, along with additional</p>

Criteria	JORC Code Explanation	Commentary
		geotechnical diamond drilling to assist in the project's progression.